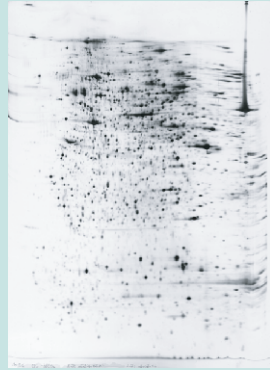


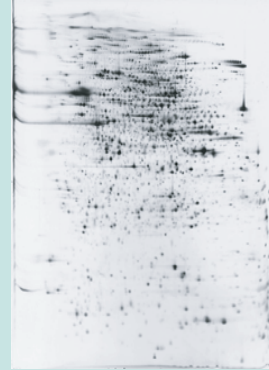
Proteome Analysis by Extreme High Resolution 2D Electrophoresis

Analysis of all kind of protein containing samples for

-
- Target identification
- Biomarker identification
- Surrogate marker identification
- Differential protein pattern analysis
- Drug mechanism of action
- Predictive toxicology



Mouse brain



Yew leaves



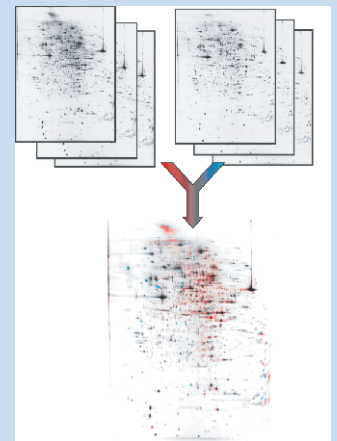
E. coli

From a single protein analysis to highly complex projects - we offer answers to every proteomics question!

Proteomics Pilot Study

2 samples 3 tests conducted for each! (3x control vs. 3x modified/diseased sample)

- Including - 6x sample preparation (one step protein extraction)
- 6x extreme high resolution 2D electrophoresis (23 x 30 cm)
 - silver staining of the 2DE gels
 - differential 2DE image analysis incl. false colour images
 - result report of regulated protein spots (p<0.05)
 - with statistics (Mann-Whitney, t-test) and 2DE images



Special Price: 3000 EURO (Europe) / 3500 US\$ (North America)
(An additional 20% off regular Price! Valid through Dec.31, 2006)

[on request (optional): protein identification by nanoLC-ESI-MSMS]

Sample Requirements for Standard Analyses

- total protein: > 500µg; buffer: low salt (< 50 mM), without ionic detergents
- Cells: > 6x10⁶ cells, 3x washed by PBS and centrifuged at 4°C, cell pellet flash frozen
- Tissue: >30 mg blood-free tissue, washed by PBS at 4°C, flash frozen
- Plasma/Serum/CSF: cell-free, flash frozen (on request: depletion of abundant proteins, e.g. albumin, IgG etc.)

CONTACT YOUR VWR SALES MANAGER AT:

- research-services@at.vwr.com for Europe**
- vwrbiosciences@vwr.com for North America**

Proteome Factory

Your Specialist in Proteomics, Protein Identification, and Characterization!